



WILLIAM COGGIN

William Coggin is an artist living and working in Brooklyn, NY. His work consists of ceramic objects, installations, and furniture that are freeform and organic in nature. Functionality has always been a main consideration within his practice, often adapting highly sculptural forms into tables, lamps or mirrors.

His Pseudopodia series consists of forms inspired by the temporary arm-like structures that cells and microorganisms develop in order to feed and move. These lava glaze pieces move beyond traditional inspiration from the natural world by representing phenomena that can only be observed with the aid of technology. Beyond this, William's diverse body of work is a testament to his willingness and ability to explore the ceramic medium in the past and present context, unmoored from current trends or expectations.

FURNITURE



Ripple Side Table
Hand-built stoneware
L 16 1/2" x W 16" x H 18"



Stalagmite Side Table
Hand-built stoneware
Dia 15" x H 17"



Ceramic Drum Side Table
Hand-built stoneware
Dia 15" x H 18"



Channel Side Table
Hand-built stoneware
Dia 16 1/2" x H 17"



Ceramic Side Table
Hand-built stoneware
Dia 12 1/2" x H 18"



Pseudopodia Spike Side Table
Hand-built stoneware
Dia 24" x H 16"



Pseudopodia Side Table
Hand-built stoneware
Dia 26" x H 20"



Extrude Side Table
Hand-built stoneware
Dia 16" x H 18"



LIGHTING



Channel Lamp
Hand-built stoneware
L 6" x W 6" x H 17"



Extrude Table Lamp
Hand-built stoneware
L 11" x W 10" x H 15"



Pseudopodia Lamp
Hand-built stoneware
Dia 8" x H 11"



Bubble Pendant
Hand-built stoneware
Dia 8" x H 13"



MIRRORS



*Freeform Circle
Mirror*
Hand-built stoneware
Dia 32"



Bubble Mirror
Hand-built stoneware
Dia 21"



Disk Bubble Mirror
Hand-built stoneware
Dia 24"



Askew Bubble Mirror
Hand-built stoneware
Dia 24"



MIRRORS



Pseudopodia Mirror
Hand-built stoneware
L 33" x W 21" x D 5"



Channel Mirror
Hand-built stoneware
H 27" x W 16" x D 1"

GLAZES



Bright Red

WCS 001



Raspberry Crackle

WCS 003



Textured Brown

WCS 005



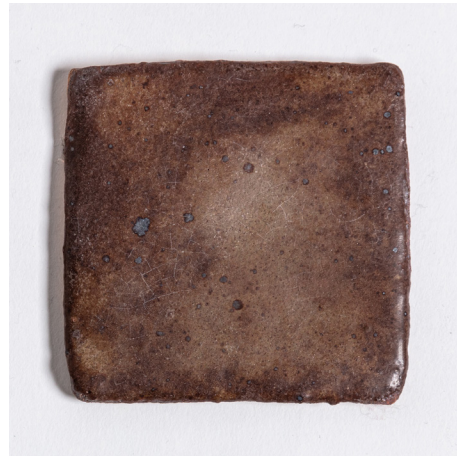
Speckled Tan

WCS 007



Selsor Red

WCS 002



Soft Brown

WCS 004



Desert Taupe

WCS 006



KT Amber-Light

WCS 008

GLAZES



Honey Amber

WCS 009



Shino

WCS 011



Borax

WCS 016



Sand

WCS 019



KT Amber

WCS 010



Honey Peach

WCS 013



Birch

WCS 017



Rutile Crackle

WCS 020

GLAZES



White Crackle

WCS 022



Light Speckled Green

WCS 024



Seafoam

WCS 026



Odyssey Green

WCS 029



Speckled Beach

WCS 023



Textured Moss

WCS 025



Pad Algae

WCS 027



Odyssey Green with Tin

WCS 030

GLAZES



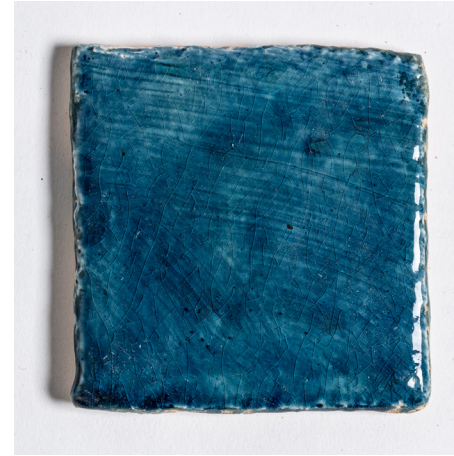
Tarnished Silver

WCS 031



Peacock

WCS 033



Deb's Blue

WCS 035



Cobalt

WCS 039



Halo

WCS 032



Turquoise

WCS 034



Blue Cloud 9

WCS 037



Deep Cobalt

WCS 040

GLAZES



Brushed Bronze

WCS 041



White Cloud 9

WCS 045



Metallic Oribe

WCS 042

DESIGNS



Glaze: Batz White
Design: Ridge

WCS 046



Glaze: Odyssey Green
Design: Ridge

WCS 029

DESIGNS



Glaze: Metallic Oribe
Design: Grid
WCS 050



Glaze: Green Oribe
Design: Bark
WCS 052



Glaze: Off-White Lava
Design: Vine
WCS 051



Glaze: Deb's Blue
Design: Tangled
WCS 035

